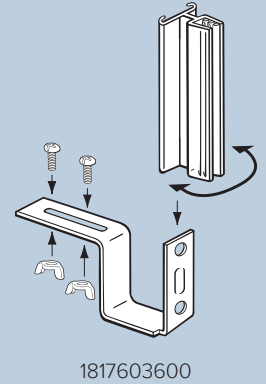


# SuperGrip® Under-Shelf Mount Sign Holder



## Features and Benefits

- ◆ Use two holders to support blade signs from shelf to shelf
- ◆ Hinge allows signs to flex
- ◆ Fits most perforated shelves using included wing nuts and bolts
- ◆ 3" L, two capacities hold material up to .100", or .100"-.250" thick
- ◆ Beige powder-coated metal / clear PVC
- ◆ Sign holder and bracket assembled; wing nuts and bolts packed bulk

## Attract attention in the aisle with blade signs

Add impact at the shelf's edge with the SuperGrip® Under-Shelf Mount Sign Holder. This innovative sign holder attaches below shelf to deliver eye-catching product, price or promotional messages at the point of sale without product interference.

Sign Holder can be used on one shelf for smaller signage or create an aisle violator using two Sign Holders to display longer signage, ideal for category management programs.

## Specifications

| Item No.   | Ref. No. | Style    | Capacity    | Pack |
|------------|----------|----------|-------------|------|
| 1817603600 | R-UMSH-3 | w/ hinge | .100"       | 1    |
| 1817603601 | -        | w/ hinge | .100"-.250" | 1    |

*Additional lengths and colors can be made to order (minimum quantities apply)*

20190328

For more information,  
call **800.422.2547**  
or visit [www.siffron.com](http://www.siffron.com)

**siffron**<sup>™</sup>  
always on